

Crane

SOOTHING COOL MIST AROMA DIFFUSER

FOR MODELS: EE-8000



If you have any questions about the operation of your aroma diffuser, please contact Crane Customer Care.

Toll Free: 888-599-0992

Email: customer-service@crane-usa.com



**PLEASE READ AND SAVE ALL INSTRUCTIONS TO ENSURE
THE SAFE AND EFFECTIVE USE OF THIS AROMA DIFFUSER.**

SAVE YOUR DATED PROOF OF PURCHASE!

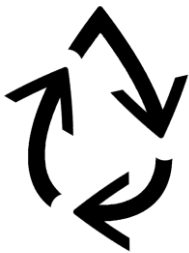
[You will need this in case of warranty]

staple
tape
or paperclip
your
receipt
HERE

TABLE OF CONTENTS

Table of Contents, Sustainability	P. 3
Safety Instructions	P. 4-5
List of Main Parts	P. 6
Technical Specifications	P. 7
Use & Operation	P. 8
Maintenance	P. 9
Customer Care & Troubleshooting	P. 10
Warranty	P. 11

CRANE & SUSTAINABILITY



Crane USA is dedicated to your environment both inside and outside your home. We know if cleaned and maintained properly, our products last for years helping to reduce unnecessary use of resources and emissions making new products.

The Crane manual you are holding is from recycled materials with no added finishes or harmful dyes. If the aroma diffuser should no longer operate, the top piece (bamboo & glass) can be recycled as instructed by your recycling service. Please be sure to dispose of the rest of the unit in an environmentally friendly way by taking it to a public collection point.

**PLEASE DO NOT PLACE BROKEN AROMA DIFFUSERS
WITH YOUR REGULAR HOUSEHOLD WASTE.**

IMPORTANT SAFETY INSTRUCTIONS



WARNING! READ AND SAVE THESE INSTRUCTIONS. Failure to follow all the instructions listed below may result in electric shock, fire and/or serious personal injury.

1. **DO NOT move once the diffuser has been filled with water.**
2. DO NOT operate outdoors. This diffuser is intended for indoor use only.
3. Disconnect the diffuser from power before cleaning.
4. DO NOT operate without water. Always have water in the base when operating.
5. Use only clean, cool water to fill the base. Do not use hot water.
6. DO NOT pour water into any openings other than the base.
7. DO NOT cover any openings on the unit or insert objects into any openings.
8. DO NOT aim mist directly at children, pets, walls, furniture or electrical appliances.
9. Use only with the provided electrical cord.
10. **ALWAYS plug and unplug diffuser with dry hands to avoid electric shock.**
11. Never operate the diffuser with a damaged cord or plug.
12. Always place the unit on a smooth, flat, lint-free, non-metallic, waterproof and level surface.
13. Position the diffuser away from direct sunlight.
14. Keep the cord away from heated surfaces and areas where it could be walked on or tripped over.
15. Unplug the diffuser when not in use and whenever you clean or move the unit.
16. The diffuser should not be left unattended in a closed room.
17. The diffuser requires daily and weekly cleaning to operate appropriately. Refer to cleaning instructions.
18. NEVER use detergents, solvents or abrasive agents to clean the diffuser.
19. Do not tilt, tip or attempt to empty or fill the diffuser while it is in operation.

SAVE THESE INSTRUCTIONS!

GENERAL SAFETY INSTRUCTIONS



WARNING! Read and understand all instructions. Failure to follow all instructions listed below may result in electric shock, fire or serious personal injury. The warnings, cautions, and instructions discussed in this instruction manual cannot cover all possible conditions and situations that may occur. It must be understood by the user that common sense and caution are a factor which cannot be built into this product, but must be supplied by the user.

THIS DIFFUSER IS NOT A TOY!

Do not let your child play with this diffuser. Serious injury and electrocution might be possible. This diffuser has to be operated by an adult only. Children should be supervised to ensure that they do not play with the diffuser.

SAVE ALL INSTRUCTIONS!

CAUTION: A short Power Supply Cord is provided to reduce the risk of personal injury resulting from becoming entangled in or tripping over a longer cord. Extension cords are available from local hardware stores and may be used if care is exercised in their use. If an extension cord is required, special care and caution is necessary. Also the extension cord must be (1) marked with an electrical rating of 125 V and at least 13 A., 1625 W., and (2) the cord must be arranged so that it will not drape over the countertop or tabletop where it can be pulled on by children or accidentally tripped over.

ELECTRIC POWER

If the electric circuit is overloaded by other appliances, your diffuser and/or appliances may not operate properly. The diffuser should be operated on a separate electrical circuit from other operating appliances.

POLARIZED PLUG

This diffuser has a polarized plug (one blade is wider than the other). As a safety feature to reduce the risk of electrical shock, this plug is intended to fit in a polarized outlet only one way. If the plug does not fit fully in the outlet, reverse the plug. If it still does not fit, contact a qualified electrician. Do not attempt to defeat this safety feature.



SAFETY WARNING

Although your diffuser is easy to operate, for your safety, the below warnings must be followed:

1. Do not place the diffuser near a heat source.
2. Never leave the diffuser unattended while connected to the electrical outlet.
3. To avoid any accidents, never cover the lid when the diffuser is in operation.
4. Use the diffuser on a smooth, flat, lint-free, non-metallic, waterproof, and level surface away from water.
5. Do not unplug from the wall socket by pulling on the supply cord.
6. The diffuser must be unplugged:
 - A. Before either filling or emptying the base.
 - B. Before any cleaning or maintenance is performed.
 - C. After each use.
 - D. If it appears to be faulty.

THIS PRODUCT IS INTENDED FOR HOUSEHOLD USE ONLY.

LIST OF MAIN PARTS

Fig. 1 (Bottom of Base)

1. Power Button
2. Fan Intake
3. Plug Port



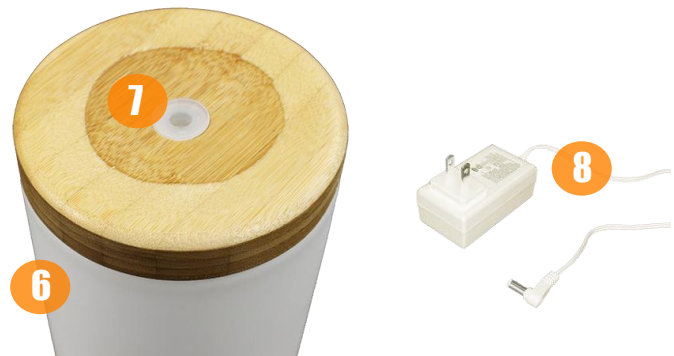
Fig. 2 (Top of Base)

4. Water Reservoir
5. Nebulizer



Fig. 3 (Other Parts)

6. Dome (Cover)
7. Mist Outlet
8. Detachable Cord



TECHNICAL SPECIFICATIONS

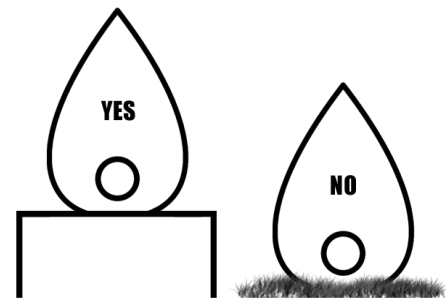
Rating Voltage	100-240V
Frequency	50/60Hz
Water Capacity	3oz / 88ml
Run Time	Up to 5-6 hours

BEFORE EACH USE:

CHECK DIFFUSER PLACEMENT:

Place the diffuser on an elevated, non-metallic, lint-free, waterproof, level surface at least 2 feet above the floor.

- **DO NOT PLACE ON CARPET OR TOWEL.** The fan vent is located on the bottom of the base. The fan vent **MUST NOT** be obstructed.
- **DO NOT PLACE ON WOOD SURFACE** or near furniture that can be damaged by oils or too much moisture.



CAUTION

- **DO NOT attempt to operate the diffuser without water in the base.**
- **DO NOT plug or unplug the Power Cord with wet hands as electric shock could occur.**

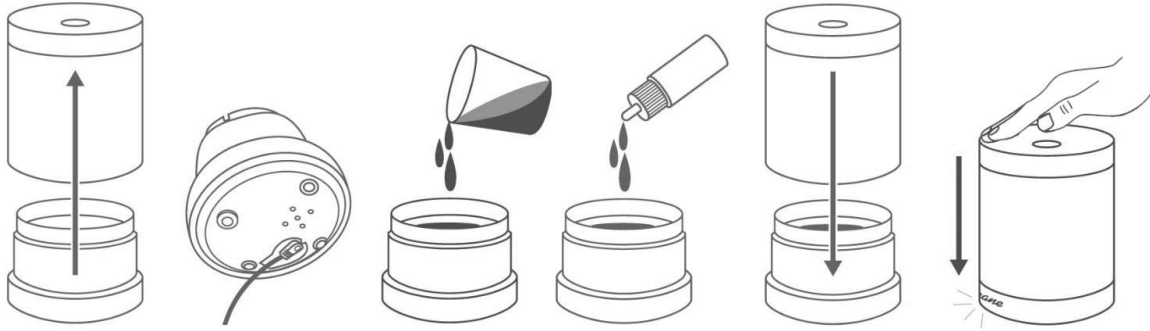
ASSEMBLY & USE

1. Plug the adapter cord into the base first, then plug the unit into a wall outlet.
2. Remove the Mist Dome and using a separate cup, fill the water reservoir in the base with up to a ½ cup of cool water.

DO NOT FILL ALL THE WAY TO THE RIM. NO MIST WILL BE ABLE TO RISE.

DO NOT use hot water. Use cool water only.

DO NOT pour water into the Mist Channel.



DO NOT MOVE THE DIFFUSER ONCE FILLED.

4. Add desired/recommended amount of oils or humidifier liquids to the water.
5. Replace the dome, making sure it fits perfectly.
6. Press down on the top of the unit towards the front (where the CRANE logo is engraved) to press the power button.
 - Press 1x: Mist on. Changing light colors
 - Press 2x: Mist on. Freeze desired light color
 - Press 3x: Mist on. No lights
 - Press 4x: Power off.
7. The diffuser will automatically shut off when the water level is too low as a safety feature. Refill the water reservoir with water & desired essential oils as needed.
8. It is normal for the temperature of the water and adapter to increase while in operation.

USING ESSENTIAL OILS or CRANE HUMIDIFIER LIQUIDS

The water reservoir allows for the addition of any essential oils or Crane Humidifier Liquids to be used during operation.

AROMA DIFFUSER MAINTENANCE

IMPORTANT: We recommend you clean your aroma diffuser every time you change oils. Essential oils can build up over time, so to ensure the best function of your diffuser, follow the below cleaning & maintenance instructions.

DO NOT leave water in the Water Reservoir when unit is not in use as it may result in the buildup of mineral deposits and bacteria that can inhibit the output efficiency of the diffuser. If water remains in the Water Reservoir for more than a day or two, bacterial growth is possible.

DAILY MAINTENANCE

1. Turn off, unplug from outlet and empty water from reservoir daily.
2. Allow all parts to air dry.
3. Leave dome off the base until ready for next use.

WEEKLY MAINTENANCE

1. Turn off, unplug from outlet and empty water from reservoir.
2. Wipe the exterior surface with soft, damp cloth.
3. Fill the Water Reservoir with ½ cup of water and 1 tablespoon of distilled white vinegar. Let sit for 20 minutes. Empty the water & rinse with clean, cool water.
4. Allow all parts to air dry.
5. Leave dome off the base until ready for next use.

NEVER IMMERSE DIFFUSER BASE IN WATER.

CLEANING OF DOME AND MIST NOZZLE

1. Mist chamber can be removed from inside of dome for cleaning.
2. Use a mixture of vinegar and water to clean and allow to dry before assembling.
3. Push mist chamber back into the dome lid while holding the mist nozzle in place.

WHEN STORING THE DIFFUSER, LET ALL PARTS DRY COMPLETELY BEFORE STORING AWAY IN A COOL, DRY PLACE UNTIL NEXT USE.

CRANE CUSTOMER CARE

CALL US: 888-599-0992 (Mon-Fri 9:00am – 4:00pm CST)
 EMAIL US: customer-service@crane-usa.com
 LIVE CHAT: available at www.crane-usa.com

TROUBLESHOOTING

DO NOT attempt to repair the motor yourself.

If the diffuser continues to not operate, please contact Crane Customer Care.

Problem	Possible Solution
<p>If diffuser does not have any power:</p>	<ul style="list-style-type: none"> ▪ Ensure unit is properly plugged into a power outlet. ▪ Check that the plug is fully inserted into the bottom of the base. ▪ The diffuser has 4 different modes: <i>Alternating Colors, 1 Color, No Color and Off</i>. Change modes by pressing down on top of the diffuser towards the Crane logo on the base to click the button.
<p>There is no mist being emitted:</p>	<ul style="list-style-type: none"> ▪ Check the water level. The unit shuts off automatically when the water level is too low as a safety feature. ▪ Make sure nothing is blocking the Mist Output. ▪ Check the fan vent on the bottom of the base is not blocked. ▪ Empty and rinse the water reservoir with cool tap water. ▪ Check for possible mineral deposits & clean using the instructions on page 9.

NOTE: Spare Parts can also be purchased online at www.crane-usa.com

CRANE WARRANTY

For more information regarding the warranty policy,
please visit our website: www.crane-usa.com/customer-service

LIMITED WARRANTY

Thank you for purchasing a Crane product which has been tested to meet our stringent quality standards. This product is warranted to be free from manufacturing defects under normal use and conditions for 1 year.

**PLEASE CONTACT US BEFORE RETURNING THIS PRODUCT TO THE STORE.
CALL CRANE CUSTOMER CARE FOR PROBLEMS AND QUESTIONS. WE CAN HELP.**

WARRANTY REQUIRES A DATED PROOF OF PURCHASE.

This warranty is void if the defect is due to accidental damage, misuse, abuse, neglect, improper repair or alteration by unauthorized persons, or a failure to follow operating instructions provided with the product. This warranty does not apply to normal wear and tear or commercial use.

In no event shall liability exceed the purchase price paid by the purchaser of the product. Under no circumstances shall there be liability for any loss – direct, indirect or incidental – or consequential damage arising out of, or in connection with the use of this product.

This warranty is valid only in the 48 contiguous states plus the District of Columbia and excludes Puerto Rico and the Virgin Islands. This warranty is effective only if the product is purchased and operated in the United States of America.

Any instructions or warranty included in this manual may be subject to change without notice. For the most up-to-date instructions and warranty information, please contact us or visit our website.

**TO RECEIVE WARRANTY INSTRUCTIONS AND RETURN AUTHORIZATION,
PLEASE CALL OR EMAIL CRANE CUSTOMER CARE.**

CRANE USA, INC.
1015 Hawthorn Dr., Itasca, IL 60143

Toll Free: 1-888-599-0992 (Monday - Friday 9:00am - 4:00pm CST)
Email: customer-service@crane-usa.com
Website: www.crane-usa.com

Crane

DESIGN FOR BETTER LIVING