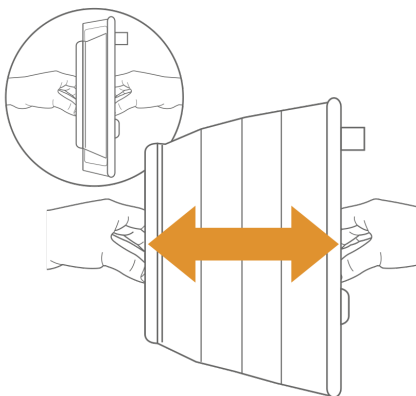


QUICKSTART

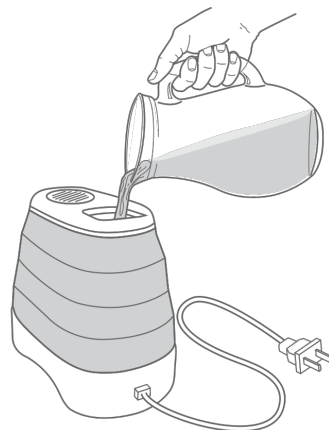
Please contact us first with any questions or problems you have about the operation of your Crane humidifier.

☎ 1-888-599-0992 ✉ questions@crane-usa.com



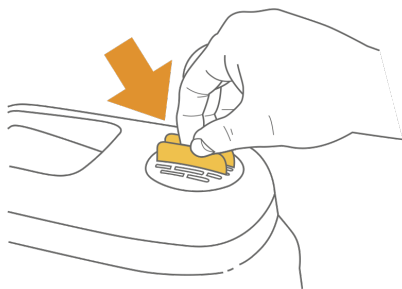
EXTEND WATER TANK

Fully extend the water tank by gently pulling each handle in opposite directions.



PLACE TANK AND FILL

Place extended tank onto base of unit and pour directly into the top of tank.



INSERT VAPOR PAD

Place a Crane Vapor Pad into the vapor pad tray for extra relief.



SET

Set in a well ventilated room and adjust intensity of mist to desired comfort level.

Crane

Collapsible Warm Mist Humidifier

For EE-5957:



**If you have any questions about the operation of
your humidifier, please contact Crane Customer
Care.**

Tel: 888-599-0992

Email: customer-service@crane-usa.com



**PLEASE READ AND SAVE ALL INSTRUCTIONS TO ENSURE
THE SAFE AND EFFECTIVE USE OF THIS HUMIDIFIER.**

FCC WARNING

This device complies with Part 15 of the FCC Rules. Operation is subject to the following two conditions: (1) this device may not cause harmful interference, and (2) this device must accept any interference received, including interferences that may cause undesired operation.

Warning: Changes or modifications to this unit not expressly approved by the party responsible for compliance could void the user's authority to operate the equipment. NOTE: This equipment has been tested and found to comply with the limits for a Class B ISM equipment, pursuant to Part 15 of the FCC Rules. These limits are designed to provide reasonable protection against harmful interference in a residential installation. This equipment generates, uses, and can radiate radio frequency energy and, if not installed and used in accordance with the instructions, may cause harmful interference to radio communications.

However, there is no guarantee that interference will not occur in a particular installation. If this equipment does cause harmful interference to radio or television reception, which can be determined by turning the equipment off and on, the user is encouraged to try to correct the interference by one or more of the following measures:

- Increase the separation between the equipment and receiver.
- Reorient or relocate the receiving antenna.
- Connect the equipment into an outlet on a circuit different from that to which the receiver is connected.
- Consult the dealer or an experienced radio/TV technician for help.

CRANE USA, INC.

1015 Hawthorn Dr., Itasca, IL 60143

Toll Free: 1-888-599-0992 (Monday-Friday 9:00am - 4:00pm CST)

Email: customer-service@crane-usa.com

Website: www.crane-usa.com

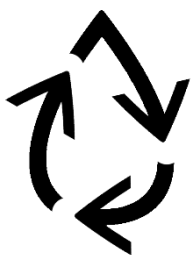
TABLE OF CONTENTS

Table of Contents & Sustainability	P. 3-4
Safety Instructions	P. 4-7
List of Main Parts	P. 8
Technical Specifications, Assembly & Use	P. 9-11
Maintenance & Storing Your Humidifier	P. 12
Customer Care & Trouble Shooting	P. 13-14
Warranty	P. 15

CRANE & SUSTAINABILITY

Crane USA is dedicated to your environment both inside and outside your home. We know if cleaned and maintained properly, our products last for years helping to reduce unnecessary use of resources and emissions making new products.


The Crane manual you are holding is from recycled materials with no added



finishes or harmful dyes. If the humidifier should no longer operate, please be sure to dispose of the unit in an environmentally friendly way by taking it to a public collection point.

PLEASE DO NOT PLACE BROKEN HUMIDIFIERS WITH YOUR REGULAR HOUSEHOLD WASTE.

IMPORTANT SAFETY INSTRUCTIONS

 **WARNING!** READ AND SAVE THESE INSTRUCTIONS. Failure to follow all instructions listed below may result in electric shock, fire and/or serious personal injury.

1. **It is advisable to carry filled Water Tank with two hands.**
2. **DO NOT operate outdoors. This humidifier is intended for indoor use only.**
3. Always have water in the Water Tank when operating the unit.
4. Use only clean, cool tap water to fill the Water Tank (filtered or distilled water is recommended to avoid white dust if tap water is too hard. **DO NOT use hot water.**
5. Always have the Mist Lid in place while the unit is operating. Place the humidifier so the mist aims away from children, walls, furniture, and electrical appliances.
6. Use only a 110-120VAC outlet.
* **ALWAYS plug and unplug unit with dry hands to avoid electric shock.**
7. Never operate the unit with a damaged cord or plug.
8. Always place the unit on a smooth, flat, lint-free, non-metallic, waterproof, and level surface and position unit away from direct sunlight. Keep the cord away from heated surfaces and areas where it could be walked on or tripped over. Unplug the unit when not in use and whenever you clean or move the unit.

9. Do not add medication or additives of any type into the Water Basin or Water Tank. Do not cover any openings on the unit or insert objects into any openings. ONLY use vapor pads, essential oils or Crane Liquids in the Vapor tray of this humidifier.
10. The unit should not be left unattended in a closed room as the air could become saturated and leave condensation on walls or furniture. Leave room door partly open when humidifier is being operated.
11. When cleaning the inside of the humidifier, keep water away from the Fan Vent. **Turn off and unplug the humidifier to wipe the exterior** (except the electrical controls) with a damp cloth. Humidifier requires regular cleaning. Please refer to the CLEANING INSTRUCTIONS in this manual.
12. Do not tilt or tip the humidifier or attempt to empty or fill it while it is in operation.
13. Do not use a detergent to clean any parts of the unit that contain water. Detergent film dissolved in the water supply can interfere with the output of the unit. Instead, always use white vinegar mixed with water to clean the humidifier.

SAVE THESE INSTRUCTIONS!

GENERAL SAFETY INSTRUCTIONS



WARNING! Read and understand all instructions. Failure to follow all instructions listed below may result in electric shock, fire, or serious personal injury. The warnings, cautions, and instructions discussed in this instruction manual cannot cover all possible conditions and situations that may occur. It must be understood by the user that common sense and caution are a factor which cannot be built into this product but must be supplied by the user.

THIS HUMIDIFIER IS NOT A TOY!

Do not let your child play with this humidifier. Serious injury and electrocution might be possible. This humidifier has to be operated by an adult only. Children should be supervised to ensure that they do not play with the humidifier.

SAVE ALL INSTRUCTIONS!

CAUTION: A short Power Supply Cord is provided to reduce the risk of personal injury resulting from becoming entangled in or tripping over a longer cord. Extension cords are available from local hardware stores and may be used if care is exercised in their use. If an extension cord is required, special care and caution is necessary. Also the extension cord must be (1) marked with an electrical rating of 125 V and at least 13 A., 1625 W., and (2) the cord must be arranged so that it will not drape over the countertop or tabletop where it can be pulled on by children or accidentally tripped over.

ELECTRIC POWER

If the electric circuit is overloaded by other appliances, your humidifier and/or appliances may not operate properly. The humidifier should be operated on a separate electrical circuit from other operating appliances.

POLARIZED PLUG

This humidifier has a polarized plug (one blade is wider than the other). As a safety feature to reduce the risk of electrical shock, this plug is intended to fit in a polarized outlet only one way. If the plug does not fit fully in the outlet, reverse the plug. If it still does not fit, contact a qualified electrician. Do not attempt to defeat this safety feature.



SAFETY WARNING

Although your humidifier is easy to operate, for your safety, the below warnings must be followed:

1. Do not place the humidifier near a heat source.
2. Never leave the humidifier unattended while connected to the electrical outlet.

3. To avoid any accidents, never cover the Mist Lid when the humidifier is in operation.
4. Use the humidifier on a smooth, flat, lint-free, non-metallic, waterproof, and level surface away from water.
5. Do not unplug from the wall socket by pulling on the supply cord.
6. The humidifier must be unplugged:
 - A. Before either filling or emptying the Water Basin and/or Water Tank.
 - B. Before any cleaning or maintenance is performed.
 - C. After each use.
 - D. If it appears to be faulty.

THIS PRODUCT IS INTENDED FOR HOUSEHOLD USE ONLY.

LIST OF MAIN PARTS

Fig. 1 (Humidifier Base)

- 1. Heating element
- 2. Fan Outlet
- 3. Power Button
- 4. Indicator lights
- 5. Water level sensor float
- 6. Mist Chamber

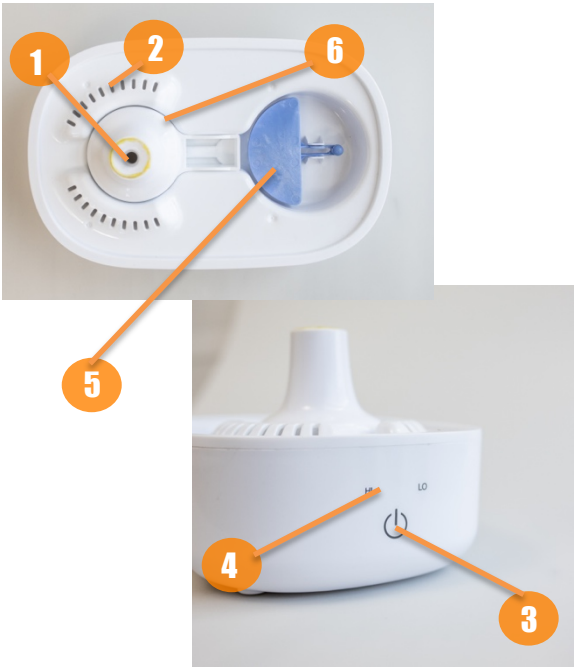


Fig. 2 (Water Tank)

- 1. Fill cover
- 2. Vapor Tray
- 3. Top Handle
- 4. Bottom handle



TECHNICAL SPECIFICATIONS

Rating Voltage	120V
Wattage	210W
Frequency	60Hz
Water Tank Capacity	Approx. 1 Gallon / 3.78 Liter
Run Time Per Tank	Up to 24 hours
Humidifying Capacity	Up to 500 sq. ft.
Noise Level	< 40 decibels from 3 ft away

BEFORE EACH USE:

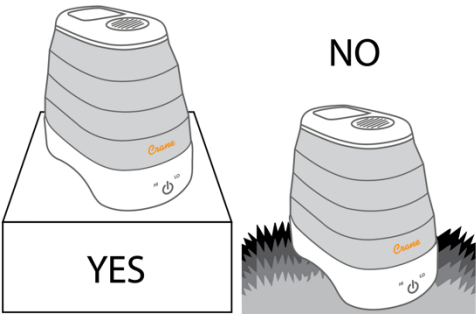
CHECK HUMIDIFIER PLACEMENT:

Place the Humidifier on an elevated, non-metallic, lint-free, waterproof, level surface at least 2 feet above the floor.

• **DO NOT PLACE ON CARPET OR TOWEL.** The fan vent is located on the bottom of the humidifier base. The fan vent **MUST NOT** be obstructed.

• **DO NOT PLACE ON WOOD**

SURFACE or near furniture that can be damaged by too much moisture.



CHECK WATER LEVEL SENSOR:

Make sure the Water Level Sensor Float is secured properly and not obstructed. (Page 4 – Fig.1)



CAUTION

- **DO NOT** attempt to operate the humidifier without water in the Water Tank.
- **DO NOT** plug or unplug the Power Cord with wet hands as electric shock could occur.

ASSEMBLY & USE

ALWAYS use fresh cool water when operating the humidifier.

1. Extend the collapsible water tank by gently pulling on both handles located on the top and bottom of the water tank (*parts 3 & 4 on page 4, fig.2*)
2. Ensure that the mist chamber (*part 6 on page 4, fig.1*) is placed into the base of the unit and covers the heating element.
3. Place extended water tank onto the empty base of your humidifier.
4. Fill water into the top of your water tank.

DO NOT fill water all the way to the rim.

DO NOT use hot water.

DO NOT add any medication, salt, or vapor pad to the water tank.

DO NOT pour water into Mist Lid.

Note: Do not attempt to move the humidifier while full water tank is placed on the humidifier base. Doing so may cause leakage of water and/or humidifier base to overfill.

5. Plug the power cord into a wall socket and turn on the unit by using the Power Button. Press 1x for high steam output, 2x for low steam output.
6. The Power Indicator Light will illuminate in blue indicating that there is enough water in the Humidifier Base and steam will begin emitting through the Mist Lid.

Note:

- Your unit will take 5-7 minutes to heat up and for steam to rise out of the top of the unit.
- After 20 seconds, the indicator light will turn off, but product will continue to run.
- Once the tank is empty, a flashing red light will be displayed over the power button.

SET THE CORRECT HUMIDITY OUTPUT: Adjust the mist output so the mist rises to be absorbed by the room air. If mist drops quickly, use the lower output setting so the mist is rising.

7. When the humidifier runs out of water, the Power Indicator Light will flash red, and the mist output will stop. This is a safety feature to prevent the humidifier from possibly overheating and damaging the base. Turn the humidifier off and unplug the unit before removing and refilling the water tank. When emptying the base, be sure to pour away from the fan outlet.

VAPOR TRAY: Place Crane Vapor Pads HS-1950) into the slots in the vapor tray on top of the unit before powering your unit on.

VAPOR PAD PRECAUTION

- **Not recommended for infants under 10 lbs. or children between 10-22 lbs.**
- **Do not use more than 2 pads in a 24-hour period.**

A NOTE ABOUT HUMIDITY

- To reduce excessive humidity or condensation, especially in small rooms, leave the room door open and adjust mist intensity to the low output setting.
- Too much humidity in the room may allow moisture to accumulate on surfaces where bacteria and fungi can grow. Moisture that gathers may also damage furniture and walls, especially wallpaper.

MAINTENANCE

Cleaning and disinfecting on a regular basis are important for maintaining the performance of your humidifier.

IMPORTANT: Water left in the tank or base when not in use may result in buildup of mineral deposits and bacteria which may inhibit the output efficiency as well as void the warranty. If water remains in the Water Tank for more than a day or two, bacterial growth is possible.

DAILY MAINTENANCE

1. Turn off, unplug from outlet, and empty water from tank & base daily.
2. Allow tank & base to air dry.

WEEKLY MAINTENANCE

1. Turn off, unplug from outlet, and empty water from tank & base.
2. With the tank extended, fill water tank halfway with clean water, add 2-4 tablespoons of white vinegar and let sit for 20 minutes. Empty water tank and rinse with clean water.
3. Fill base with warm water, add 1 tablespoon of white vinegar and let sit for 30 min. Empty base & rinse with plain water. Make sure to pour water away from the fan outlet when emptying.

TIP: Clean the heating element with a damp cloth or cotton swab after soaking.

4. Allow tank & base to air dry and tank extended until fully dried.

NEVER IMMERSE HUMIDIFIER BASE IN WATER.

END-OF-SEASON MAINTENANCE & STORING YOUR HUMIDIFIER

1. Turn off, unplug from outlet, and empty water from tank & base.
2. Follow instructions for weekly maintenance above.
3. Let all parts dry completely.
4. Store humidifier in a cool, dry place.

CRANE CUSTOMER CARE

CALL US: 888-599-0992
EMAIL US: customer-service@crane-usa.com
WEBSITE: www.crane-usa.com

TROUBLESHOOTING

DO NOT attempt to repair the motor yourself.
If the humidifier continues to not operate, please contact Crane Customer Care.

Problem	Solution
Indicator Light is flashing red with water in the water tank:	<ul style="list-style-type: none">▪ Clean the Water Level Sensor Float: Pull the float from the base by lifting the float firmly. Remove the water level sensor float and clean with white vinegar/water solution. Replace water level sensor float by pressing down firmly back into position in the humidifier base.▪ Ensure that the mist chamber is placed in the base of the unit
Humidifier Does Not Have Any Power:	<ul style="list-style-type: none">▪ Ensure unit is properly plugged into a power outlet / try another power outlet.▪ Check the Control Knob is turned to the ON position.▪ If Power On indicator light does not come on, contact Customer Care.
There is a Strange Odor:	<ul style="list-style-type: none">▪ Clean the Water Tank with a water & white vinegar solution and rinse with clean water. (Page 7)▪ Leave the empty Water Tank open in a cool place for 12 hours fully extended.

<p>Indicator Light is Green, But There's No Mist:</p>	<ul style="list-style-type: none"> ▪ Complete the weekly maintenance. (Page 7) ▪ Humidifier should be placed on a hard flat surface & fan vent should not be blocked. ▪ The base might be overfilled: Remove the tank, empty the base & replace the filled tank on the empty base. ▪ Try turning the control knob up to MAX and let it run for 10 minutes.
<p>There is no visible mist</p>	<ul style="list-style-type: none"> ▪ You will not see a large plume of visible mist like you would with a cool mist humidifier. The steam rising off the top of a warm steam humidifier will resemble steam rising off a pot of boiling water. This will especially be the case if you are using water with low mineral content, such as distilled water.
<p>Humidifier is Leaking:</p>	<ul style="list-style-type: none"> ▪ From MIST LID: Turn control knob down ▪ From TANK: Check for possible tears in the tank or around the seam of the tank ▪ From BASE: Call Customer Care

NOTE: Spare Parts can also be purchased online at www.crane-usa.com

CRANE WARRANTY

For more information regarding the warranty policy,
please visit our website: www.crane-usa.com/terms/

LIMITED WARRANTY FOR ELECTRICAL ITEMS

Thank you for purchasing a Crane product which has been tested to meet our stringent quality standards. This product is warranted to be free from manufacturing defects under normal use and conditions for 1 year.

**PLEASE CONTACT US BEFORE RETURNING THIS PRODUCT TO THE STORE.
CALL CRANE CUSTOMER CARE FOR PROBLEMS AND QUESTIONS. WE CAN HELP.**

WARRANTY REQUIRES A DATED PROOF OF PURCHASE.

This warranty is void if the defect is due to accidental damage, misuse, abuse, neglect, improper repair or alteration by unauthorized persons, or a failure to follow operating instructions provided with the product **including the use of essential oils directly into the tank and base**. This warranty does not apply to normal wear and tear or commercial use.

In no event shall liability exceed the purchase price paid by the purchaser of the product. Under no circumstances shall there be liability for any loss – direct, indirect or incidental – or consequential damage arising out of, or in connection with the use of this product.

This warranty is valid only in the 48 contiguous states plus the District of Columbia and excludes Puerto Rico and the Virgin Islands. This warranty is effective only if the product is purchased and operated in the United States of America.

Any instructions or warranty included in this manual may be subject to change without notice. For the most up-to-date instructions and warranty information, please contact us or visit our website.

**TO RECEIVE WARRANTY INSTRUCTIONS AND RETURN AUTHORIZATION,
PLEASE CALL OR EMAIL CRANE CUSTOMER CARE.**

CRANE USA, INC.

1015 Hawthorn Dr., Itasca, IL 60143

Toll Free: 1-888-599-0992 (Monday - Friday 9:00am - 4:00pm CST)

Email: customer-service@crane-usa.com

Website: www.crane-usa.com

Crane